



GeFei
WWW.GEFEI-TECH.COM

MMIO VDA Analog video Distribution

User Manual V1.0



www.gefei-tech.com

[Gefei Tech. Co., Ltd]

Table of Content

1.	Description	1
2.	Features.....	1
3.	Interfaces on the panel.....	2
3.1	Top View.....	2
3.2	Right panel.....	2
3.3	Left panel.....	3
4.	Installation Guide.....	4
5.	Technical Specifications:.....	6
	Contact Us.....	7

Copyright

Copyright ©2013 Gefei Tech. Co., Ltd All rights reserved. This document may not be copied in whole or in part.

Trademarks

Gefei-Tech, Magi, MIO, VIO, XIO, MVS, MRS are either registered trademarks or trademarks of Gefei Tech. Co., Ltd in China and/or other countries. Other trademarks used in this document are either registered trademarks or trademarks of the manufacturers or vendors of the associated products.

Disclaimer

Product options and specifications subject can be changed with notice. The information in this manual is furnished for informational use only, is subject to change with notice, and should not be construed as a commitment by Gefei Tech. Co., Ltd. Gefei Tech. Co., Ltd assumes no responsibility or liability for any errors or inaccuracies that may appear in this publication.

MMIO VDA analog video distribution

1. Description

Based on Mini MIO BOX platform, MMIO VDA is a high-quality distribution which can distribute one analog video to four analog video outputs, the mini-size unit of 96.7x65x28 mm. And the device supports CVBS input signal and automatic input detection of PAL and NTSC format.

The LED lights on the Mini box indicate the status of input signal and power supply, in order to let the user know the status immediately.

2. Features

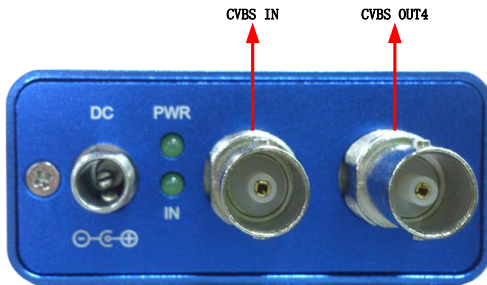
- One analog video input
- Four distribution outputs
- Support PAL/NTSC and auto-sensing input
- Power supply indicator
- Input signal indicator
- Mini MIO box structure with the size of 96.7x65x28 mm
- Power socket with fixing lock

3. Interfaces on the panel

3.1 Top View



3.2 Right panel



DC IN: 12V 1A. Power socket with fixing lock

Indicators

PWR: Power indicator, the indicator shows green when the power works normal.

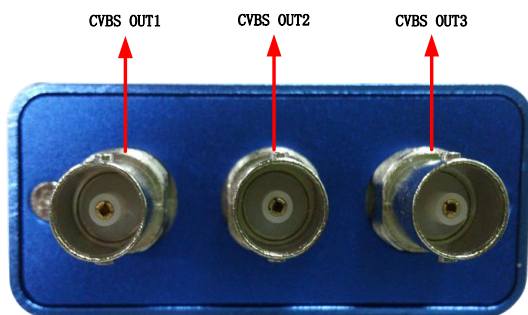
IN: Signal input indicator, the indicator shows green when the input signal is in normal status.

Signals

CVBS IN: BNC interface. It supports PAL/NTSC input source and auto-detection of input signal.

CVBS OUT4: BNC interface. It's one of four distribution outputs.

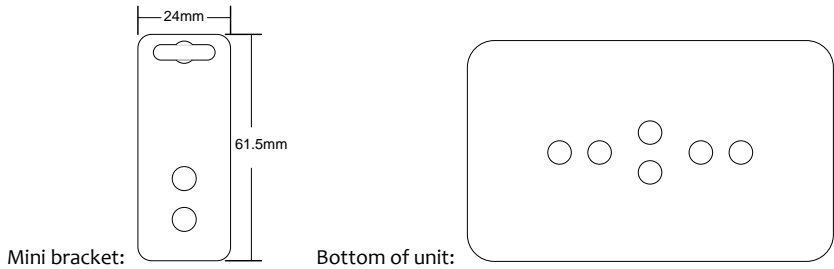
3.3 Left panel



CVBS OUT1-3: Three BNC interfaces are distribution outputs.

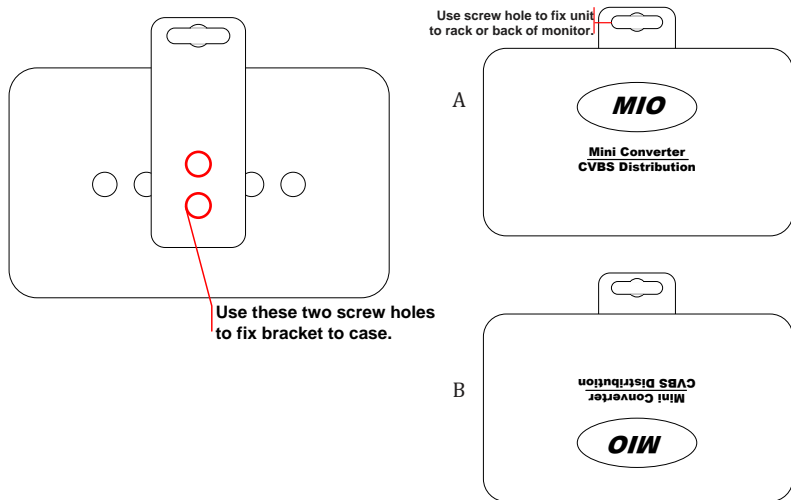
4. Installation Guide

The unit is equipped with mini mounting bracket. And there are several screw holes on the bottom of unit for installing the mini bracket. Please see the pictures below.



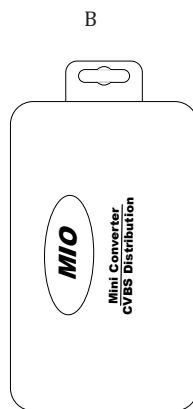
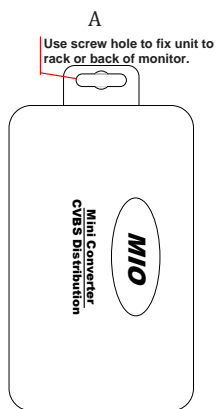
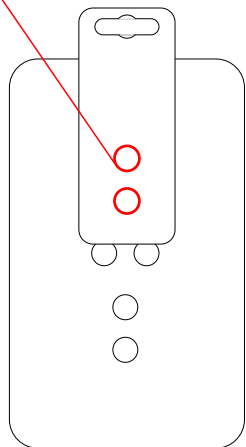
There are several ways to fix this bracket to case. According the direction of connection, you can choose one appropriate way to fix it.

Fix the bracket vertically like this:



Fix the bracket horizontally like this:

Use these two screw holes
to fix bracket to case.



5. Technical Specifications:

Input

Analog video input:

Input interface: CVBS, BNC connection

Impedance: 75Ω

System: PAL/NTSC

Output

Analog video output:

Output interface: CVBS, BNC connection

Impedance: 75Ω

Signal amplitude: 1Vpp

Peak level: 0.7V

Horizontal sync. level: -0.3V

Color sync. peak: 300mv

Status indicator:

Two indicators of input signal and power supply status

Power consumption

Power: 12VDC 1A

Dimension: 96.7×65×28 mm

Contact Us

Technical support

Tel:010-58858188

Fax:010-58858189

Website

www.gefei-tech.com

E-mail: swang@gefei-tech.com

Address

Beijing Gefei Tech. Co., Ltd

A-603 Power Creative Plaza

NO.1 Shangdi E.Rd.

Haidian District Beijing 100085

To Find More information , please visit www.gefei-tech.com