



## MMIO EMB-HSDI 3G/HD/SD Signal & Analog Audio Embedder

User manual V1.0



# Table of Content

|     |                                      |    |
|-----|--------------------------------------|----|
| I   | Description.....                     | 1  |
| II  | Features.....                        | 1  |
| III | MMIO EMB-HDSI interface display..... | 2  |
|     | 3.1 Overview.....                    | 2  |
|     | 3.2 Right panel.....                 | 2  |
|     | 3.3 Left panel.....                  | 3  |
|     | 3.4 Front panel.....                 | 4  |
| IV  | Installation Guide.....              | 6  |
| V   | Technical specification.....         | 8  |
| V   | Contact.....                         | 10 |

## Copyright

Copyright © 2009 Gefei Tech. Co., Ltd All rights reserved. This document may not be copied in whole or in part.

## Trademarks

Gefei-Tech, Magi, MIO, VIO, XIO, MVS, MRS are either registered trademarks or trademarks of Gefei Tech. Co., Ltd in China and/or other countries. Other trademarks used in this document are either registered trademarks or trademarks of the manufacturers or vendors of the associated products.

## Disclaimer

Product options and specifications subject can be changed without notice. The information in this manual is furnished for informational use only, is subject to change without notice, and should not be construed as a commitment by Gefei Tech. Co., Ltd. Gefei Tech. Co., Ltd assumes no responsibility or liability for any errors or inaccuracies that may appear in this publication.

## Revision Status

| Rev Date      | Description  |
|---------------|--|
| Dec. 10, 2013 | Initial release of the MMIO EMB-HSDSI User Manual<br>Firmware V1.0 |
|               |  |

## MMIO EMB-HDSDI

### I Description

MMIO EMB-HDSDI is a kind of embedder based on Mini-Box chassis. It can embed one analog audio stereo signal into a single serial digital signal, and output 1 serial digital signals with embedded audio. It supports SD-SDI, 1.5 Gbps HD-SDI and 3.0 Gbps HD-SDI for inputs and outputs. It can also be applied to digital signal with embedded audio for input signal.

MMIO EMB-HDSDI supplies real-time input signal status indicator and power indicator which make it convenient to monitor. The embedded audio channel can be selected though DIP Switch.

MMIO EMB-HDSDI is easy to install, and can be widely used in broadcasting system, studios and other professional audio fields.

### II Features

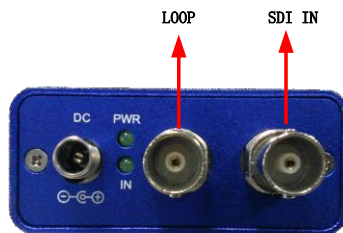
- ✧ 2 analog audio stereo signal embedded into a single serial digital signal
- ✧ Inputs and outputs for SD-SDI, 1.5Gb/s HD-SDI and 3.0Gb/s HD-SDI
- ✧ Support self-definition embedded audio channel via DIP Switch
- ✧ All audio interfaces adopt 3-PIN connector, balanced input
- ✧ Supply real-time input signal status indicator and power indicator
- ✧ Support bypass function with power on

### III MMIO EMB-HDSDI interface display

#### 3.1 Overview



#### 3.2 Right panel



**DC IN:** 12V 1A

**PWR:** Power indicator, when the power works normally, the indicator shows green.

**IN:** Input signal indicator, when the input signal is correct, the indicator shows green.

**SDI IN:** BNC interface, digital signal input with embedded or non-embedded audio, support the SD-SDI, HD-SDI, and 3G-SDI.

SD: 525i 60, 625i 50

HD: 720p 50Hz/59.94Hz/60Hz

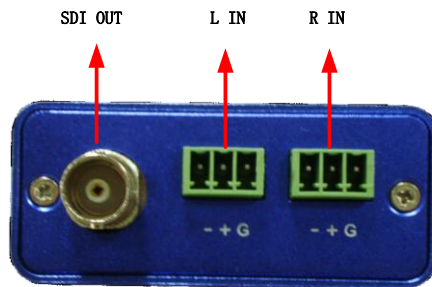
1080i 50Hz/59.94Hz/60Hz

1080p 23.97Hz/24Hz/25Hz/29.97Hz/30Hz

1080p 50 Hz/59.94Hz/60 Hz

**SDI LOOP:** BNC interface, support bypass SDI input with power on.

### 3.3 Left panel



**SDI OUT:** BNC interface, 1 serial digital signal outputs with embedded audio.

**L-IN & R-IN:** 3pin interface, 1 analog audio stereo signal input.

### 3.4 Front panel



**MODE SET:** DIP switch, users can set DIP position to achieve more functions, the DIP specific meaning as following:

| DIP Switch                             |            | 1   | 2   | 3   | 4   | 5   | 6   | 7   | 8   | 9   | 10  |
|--|------------|-----|-----|-----|-----|-----|-----|-----|-----|-----|-----|
| Select<br>embedded<br>audio<br>channel | Silence    | OFF | OFF | OFF | OFF | OFF | OFF | OFF | OFF | OFF | OFF |
|  | G1 CH1&CH2 | ON  | OFF | OFF | OFF | OFF | OFF | OFF | OFF | OFF | OFF |
|  | G1 CH3&CH4 | OFF | ON  | OFF | OFF | OFF | OFF | OFF | OFF | OFF | OFF |
|  | G2 CH1&CH2 | OFF | OFF | ON  | OFF | OFF | OFF | OFF | OFF | OFF | OFF |
|  | G2 CH3&CH4 | OFF | OFF | OFF | ON  | OFF | OFF | OFF | OFF | OFF | OFF |
|  | G3 CH1&CH2 | OFF | OFF | OFF | OFF | ON  | OFF | OFF | OFF | OFF | OFF |
|  | G3 CH3&CH4 | OFF | OFF | OFF | OFF | OFF | ON  | OFF | OFF | OFF | OFF |

|  |            |     |     |     |     |     |     |     |     |     |     |     |
|--|------------|-----|-----|-----|-----|-----|-----|-----|-----|-----|-----|-----|
|  | G4 CH1&CH2 | OFF | OFF | OFF | OFF | OFF | OFF | OFF | ON  | OFF | OFF | OFF |
|  | G4 CH3&CH4 | OFF | OFF | OFF | OFF | OFF | OFF | OFF | OFF | ON  | OFF | OFF |
|  | Auto       | OFF | OFF | OFF | OFF | OFF | OFF | OFF | OFF | OFF | OFF | ON  |

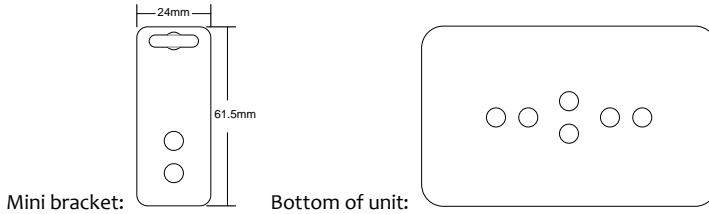
**Note:** Power switch UP=OFF DOWN=ON

When the analog audio stereo are embedded to certain channels of SDI input, then other audio channels will have no audio any more. For instance, embed analog audio stereo to G1 CH1&2, so G1 CH3&4 and other audio groups have no audio.



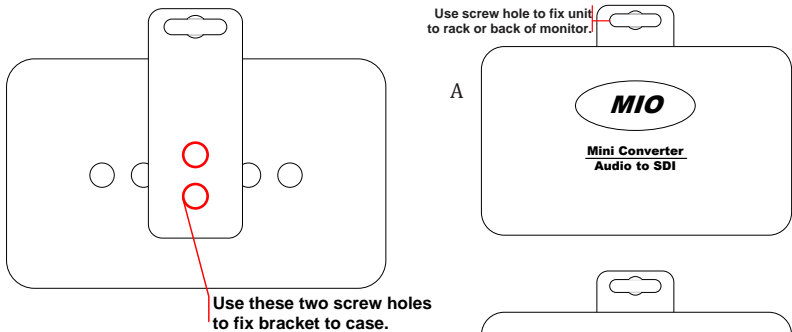
## IV Installation Guide

The unit is equipped with mini mounting bracket. And there are several screw holes on the bottom of unit for installing the mini bracket. Please see the pictures below.

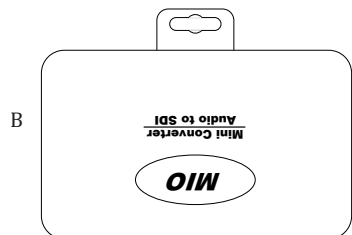


There are several ways to fix this bracket to case. According the direction of connection, you can choose one appropriate way to fix it.

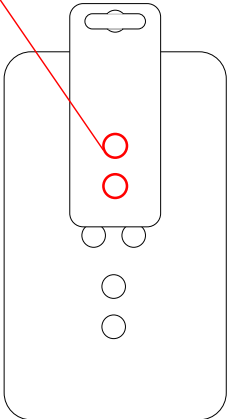
Fix the bracket vertically like this:



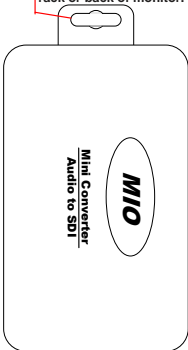
Fix the bracket horizontally like thiSs:



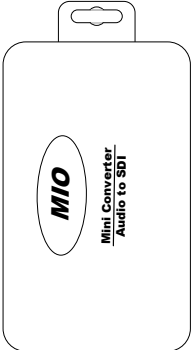
Use these two screw holes to fix bracket to case.



A  
Use screw hole to fix unit to rack or back of monitor.



B



## V Technical specification

### Digital video input:

Input interface: 1\*HD/SD-SDI, BNC connection

Impedance: 75Ω

Format: SMPTE-259M-C; 270Mb/s

SMPTE-292M; 1.485Gps

SMPTE-425; 2.970Gps

### Analog audio Input:

Input interface: 2\*3pin

Impedance: 600Ω

### Digital video output:

Output interface: 1\*HD/SD-SDI, BNC connection

1\*HD/SD-SDI LOOP, BNC connection

Impedance: 75Ω

Format: SD: 525i 60, 625i 50

HD: 720p 50Hz/59.94Hz/60Hz

1080i 50Hz/59.94Hz/60Hz

1080p 23.97Hz/24Hz/25Hz/29.97Hz/30Hz

1080p 50 Hz/59.94Hz/60 Hz

SMPTE 259M-C; 270Mb/s

SMPTE-292M; 1.485Gps

SMPTE-425; 2.970Gps

Level: 800mV±10%

Rise time/Fall time:  $\leq 270\text{PS}$  (20%-80%) (HD)  
 $750\sim 1500\text{PS}$  (20%-80%) (SD)

Jitter:  $< 0.2\text{UI}$  (100 kHz)

**Status indicator:**

Input signal status indicator

Power indicator

(Indicate by shining or extinguishing of the green LED)

**Power consumption:**

Power: 12VDC 1A

Dimension: 123mm\*92mm\*29mm

## V Contact

Technical support

Tel: 010-58858188

Fax: 010-58858189

Website

[www.gefei-tech.com](http://www.gefei-tech.com)

E-mail: [swang@gefei-tech.com](mailto:swang@gefei-tech.com)

Address

Beijing Gefei Tech. Co., Ltd

A-603 Power Creative Plaza

NO.1 Shangdi E.Rd.

Haidian District Beijing 100085

*To find more information, please visit [www.gefei-tech.com](http://www.gefei-tech.com)*